



Segmented turning is a miraculous process that allows you to make objects and designs that Mother Nature can only dream about.

Follow Bill Kandler as he moves through the steps needed to create a successful segmented project.

Along the way you'll learn about:

- Design (Segmented Project Planner)
- Feature Ring Construction
- Material Selection & Preparation
- Segment Cutting
- Segment Gluing
- Ring Flattening
- Mounting on the Lathe
- Stacking & Turning Subsequent Layers
- Finishing

All this so you can tackle your next segmented project not as an arduous task, but as a rewarding learning experience!

Copyright © 2007
 Verified Software Products Co. - 792 Phillips Road, Arroyo Grande, CA 93420-5019
 805-489-5309 - www.segmentedturning.com



WARNING: Federal law provides severe civil and criminal penalties for the unauthorized reproduction, distribution, or exhibition of copyrighted motion pictures or video tapes. The Federal Bureau of Investigation investigates all allegations of criminal copyright infringements.

English	Color	NTSC All Regions	Running time 120 minutes	1 disc
---------	-------	---------------------	-----------------------------	--------



Bill Kandler

Segmented Turning ... A learning experience

Bill Kandler

Segmented Turning ... A learning experience

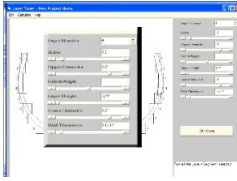
Segmented Turning

... A learning experience



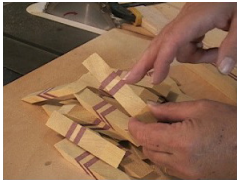
Bill Kandler





Design (22:33)

The Segmented Project Planner is used to create one design starting from Sketch-A-Bowl and another starting from a previously constructed project.



Feature Ring Construction (28:49)

Purpleheart and Yellowheart are ripped and then sanded to thickness. A lamination board is glued up, sliced, and glued to make chevrons. The chevrons are cut to make segments.



Material Selection (3:37)

Maple is selected as the primary project material with considerations of color, grain, and growth ring orientation.



Segment Cutting (6:09)

The miter fence is set as closely as possible to 15° and then tested. Then the stop block is set and the segments are cut, production style.



Ring Gluing (7:22)

A simple application of rubber bands ensures the glued rings are circles, all joints are properly aligned, and the rings are flat. A final procedure eliminates joint gaps.



Ring Flattening (1:55)

A drum sander (expensive or home built) makes quick work of flattening the rings to insure tight horizontal joints in the project.



Mounting on the Lathe (7:02)

A simple dove-tail recess is cut into the bottom layer to assure the project will be firmly anchored during later turning. A plug goes in the center and the bottom side is nearly finished.



Stacking and Turning (22:01)

Stacking and turning, layer-by-layer, reduces the effects of off-axis centering and makes it so you never have to reach into the inside too far.



Finishing (13:32)

A simple lathe attachment makes child's play of applying a great finish without runs or sags. The key is super slow turning during application of the finish.

Verified Software Products Co.
4877 Grange Rd
Santa Rosa, CA 95404
www.segmentedturning.com
(805) 489-5309